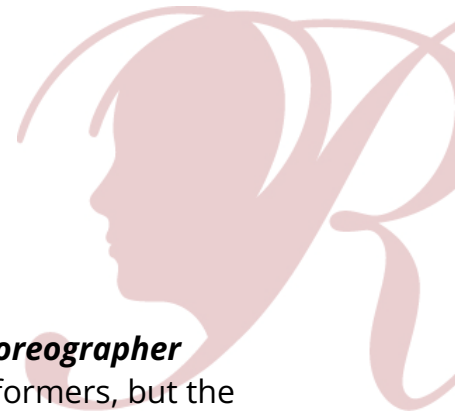


Category Guidelines

Dance Choreography



DANCE CHOREOGRAPHY is the act of creating movement. The **choreographer** (student submitting entry) maybe the performer or one of the performers, but the choreographer does not have to perform in the entry.

Consider the following styles and ensembles to portray your original choreography: Ballet, Contemporary, Hip Hop, Jazz, Tap, Folk Dance, Religious Dance, Dance Ensembles (color guard/indoor guard), Ice Skating/Dancing and Gymnastics-floor Routine.

Consider use of background song(s), props and the location to show a clear relation of the dance choreography to the theme. An explanation of the origin of the dance and/or the significance of the choreography might be a useful addition to the artist statement when submitting a dance choreography entry that involves traditional, cultural or regional dances. Whether an entry displays formal dance technique or a simple approach, it will be judged primarily how well the student uses his or her artistic vision to portray the theme, originality and creativity.

Copyright: Use of copyrighted material is prohibited. Plagiarized entries will be disqualified. Use of background music must be cited on the student entry form.

Suggestions for Audio/Visual Quality:

- Use a tripod to hold the camera still.
- Make sure there is plenty of lighting, especially if shooting indoors.
- Turn off all noise-making devices in the room (air conditioners, fans, telephones, etc.).
- Record a short test and listen to it. If needed, change the record volume or microphone location.
- Make sure the background music (if any) is audible on the recording.
- Allow for two seconds of silence at the beginning and end of your recording.

Submission Requirements:

- Only new pieces of artwork inspired by the theme may be submitted.
- Each entry must be the original work of one student only.
- Video must not exceed 5 minutes in length and 1,000 MB (1,000 megabyte) in file size.
- Accepted file formats include: .mp4, .mov, .avi file format.
- Cite background music (if any) on the student entry form.
- If necessary, label CD/DVD/flash drive with title of artwork, arts category, and division.
- Submit dance video and student entry form according to your PTA's instructions.

All participants must also follow Official Rules for Participation